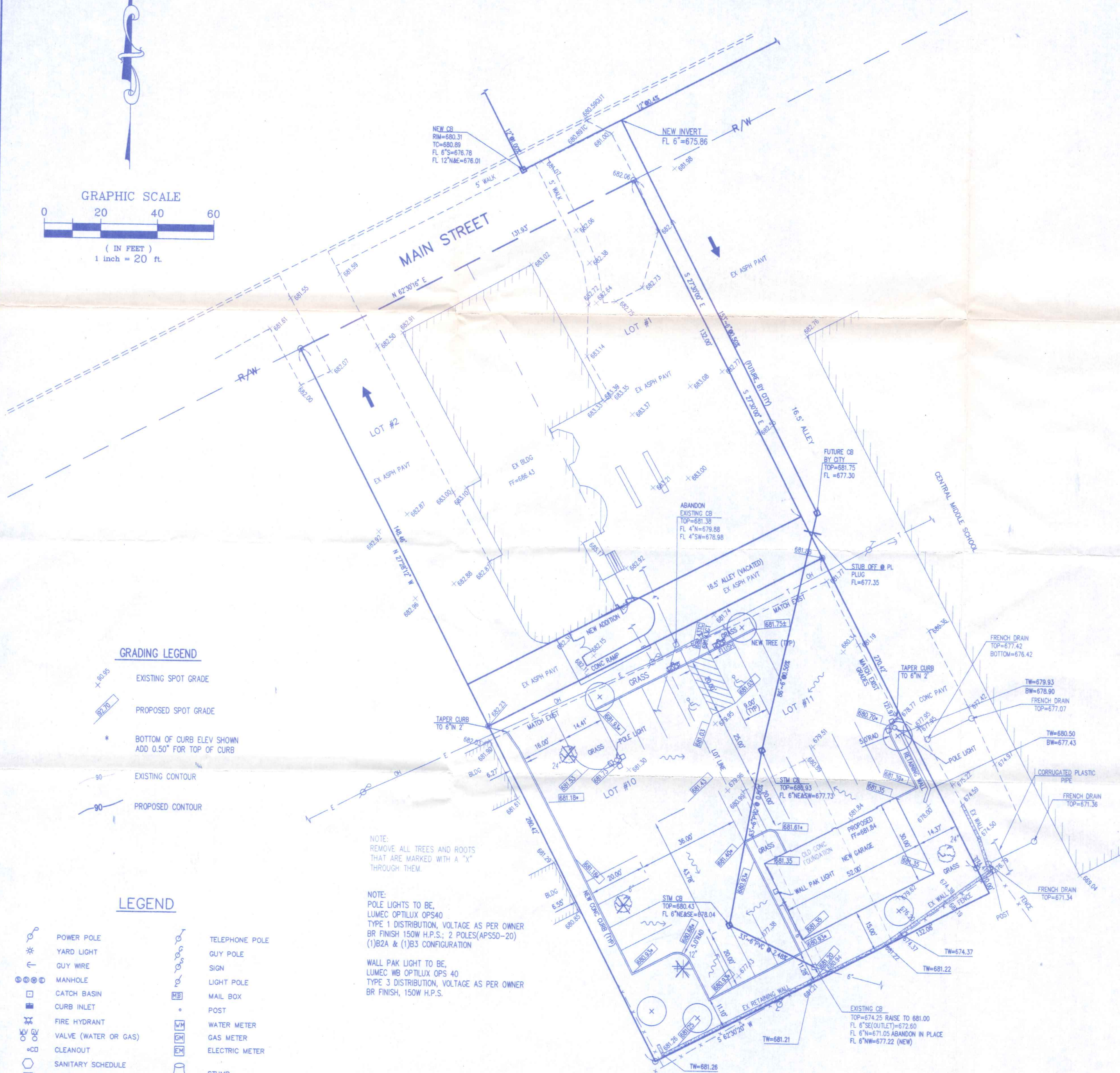
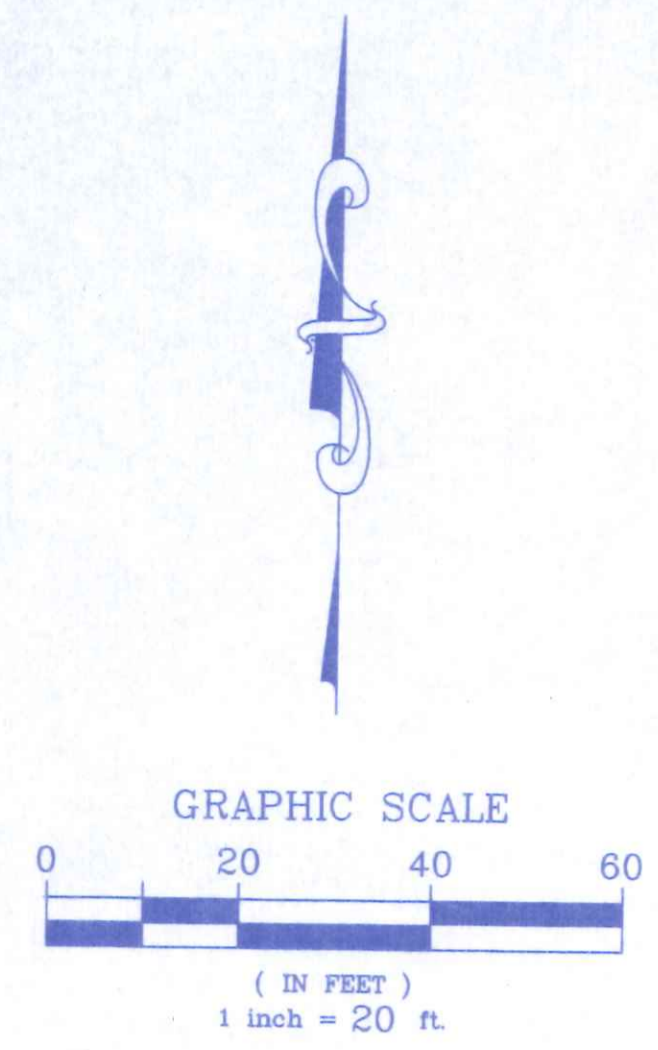


PRINTED: 11/06/97 JOB FILE: I:\7393\002\SITE\7393002.DWG

ANY INFORMATION OR DATA ON THIS DRAWING IS NOT INTENDED TO BE SUITABLE FOR REUSE BY ANY PERSON, FIRM OR CORPORATION OR ANY OTHERS ON EXTENSIONS OF THIS PROJECT OR FOR ANY OTHER PROJECT WITHOUT WRITTEN VERIFICATION AND ADAPTATION BY THE ENGINEER, ARCHITECT OR SURVEYOR FOR THE SPECIFIC PURPOSE. INTENDED TO BE AT THE USER'S SOLE RISK AND WITHOUT LIABILITY OR LEGAL EXPOSURE TO THE ENGINEER, ARCHITECT OR SURVEYOR.



**GRADING LEGEND**

- EXISTING SPOT GRADE
- PROPOSED SPOT GRADE
- BOTTOM OF CURB ELEV SHOWN ADD 0.50" FOR TOP OF CURB
- EXISTING CONTOUR
- PROPOSED CONTOUR

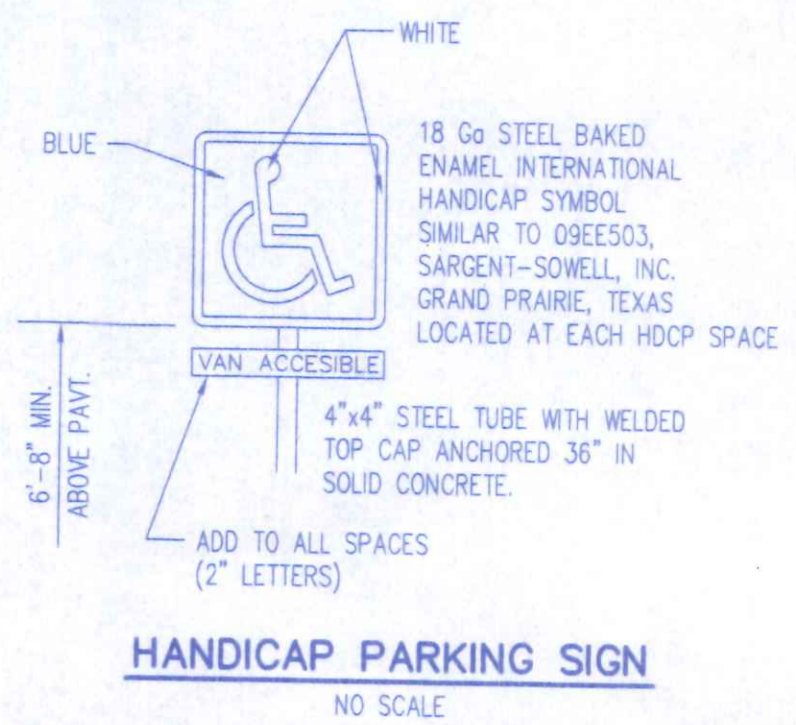
**LEGEND**

- |  |                          |  |                     |
|--|--------------------------|--|---------------------|
|  | POWER POLE               |  | TELEPHONE POLE      |
|  | YARD LIGHT               |  | GUY POLE            |
|  | GUY WIRE                 |  | SIGN                |
|  | MANHOLE                  |  | LIGHT POLE          |
|  | CATCH BASIN              |  | MAIL BOX            |
|  | CURB INLET               |  | POST                |
|  | FIRE HYDRANT             |  | WATER METER         |
|  | VALVE (WATER OR GAS)     |  | GAS METER           |
|  | CLEANOUT                 |  | ELECTRIC METER      |
|  | SANITARY SCHEDULE        |  | STUMP               |
|  | STORM SCHEDULE           |  | PINE TREE           |
|  | WATERLINE SCHEDULE       |  | TREE                |
|  | PROPOSED ELEVATION       |  | BUSH                |
|  | EXISTING ELEVATION       |  | AIR CONDITIONER/PAD |
|  | UNDERGROUND              |  |                     |
|  | OVERHEAD (AERIAL)        |  |                     |
|  | ELECTRIC TRANSFORMER/PAD |  |                     |

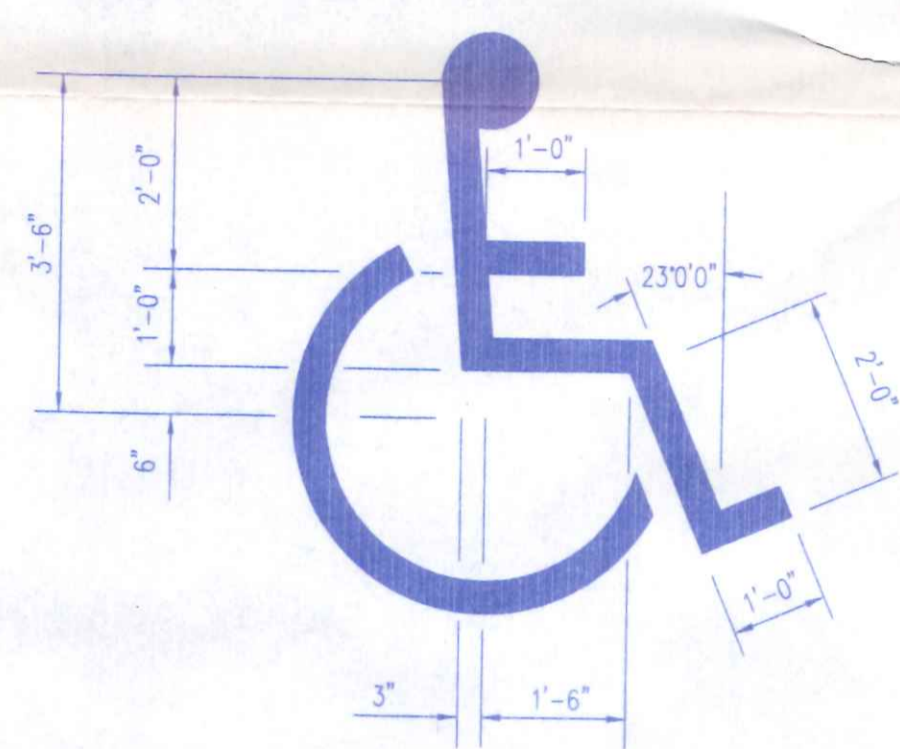
NOTE: REMOVE ALL TREES AND ROOTS THAT ARE MARKED WITH A "X" THROUGH THEM.

NOTE: POLE LIGHTS TO BE, LUMEC OPTILUX OPS40 TYPE 1 DISTRIBUTION, VOLTAGE AS PER OWNER BR FINISH 150W H.P.S.; 2 POLES/APSSD-20 (1)B2A & (1)B3 CONFIGURATION

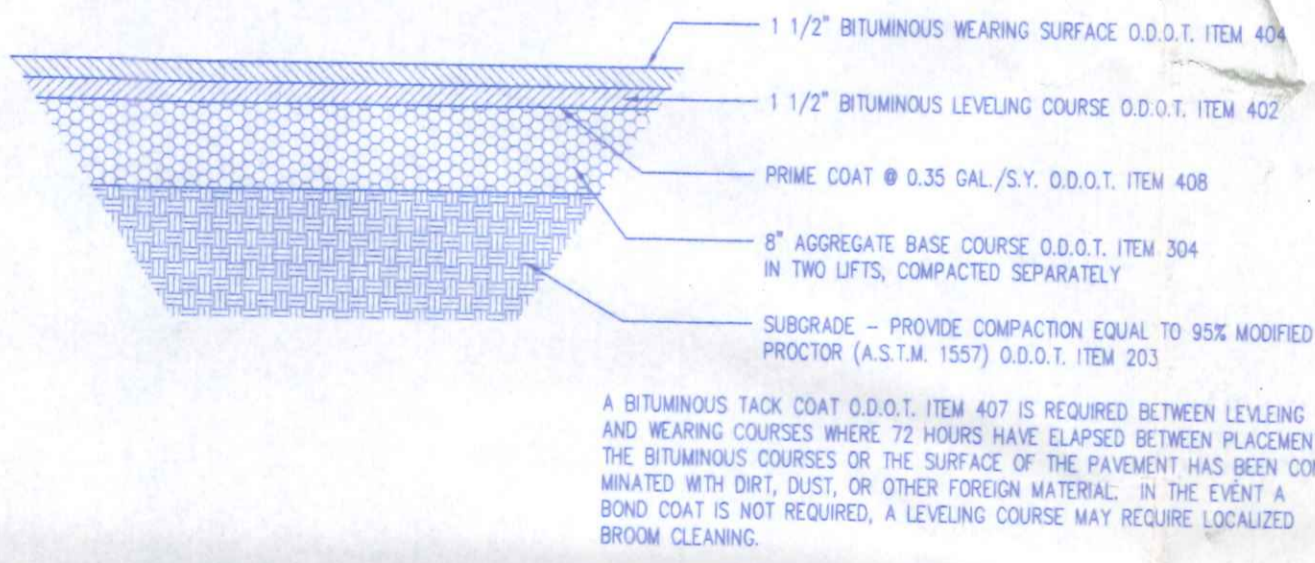
WALL PAK LIGHT TO BE, LUMEC WB OPTILUX OPS 40 TYPE 3 DISTRIBUTION, VOLTAGE AS PER OWNER BR FINISH, 150W H.P.S.



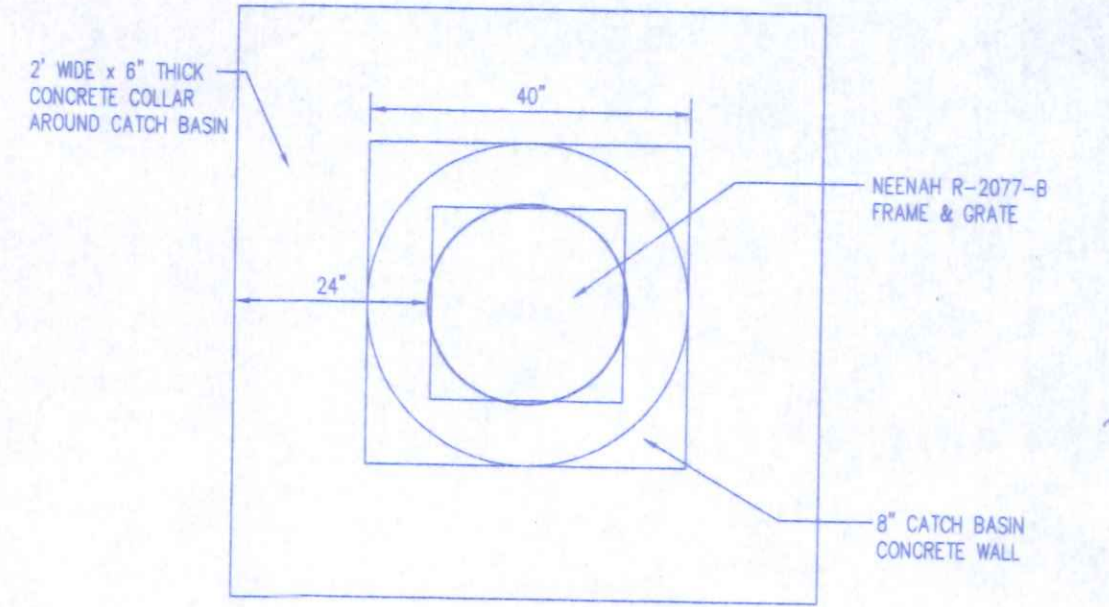
**HANDICAP PARKING SIGN**  
NO SCALE



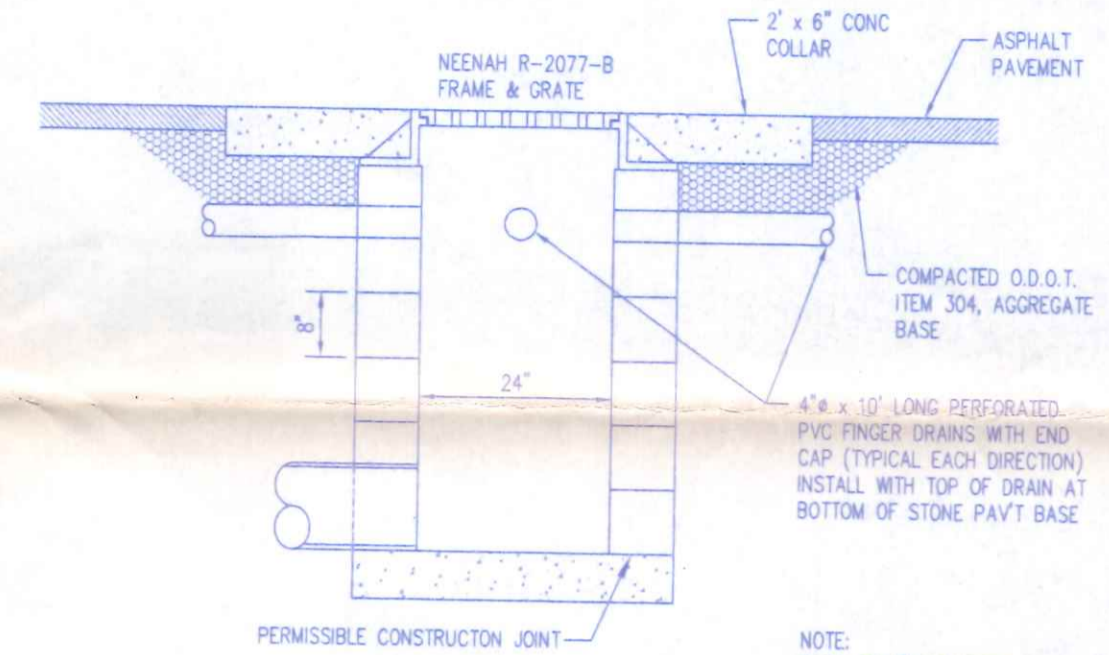
**PAINTED HANDICAP SYMBOL**  
NO SCALE



**ASPHALT CONCRETE TYPICAL PAVEMENT SECTION**  
NO SCALE



**PLAN**

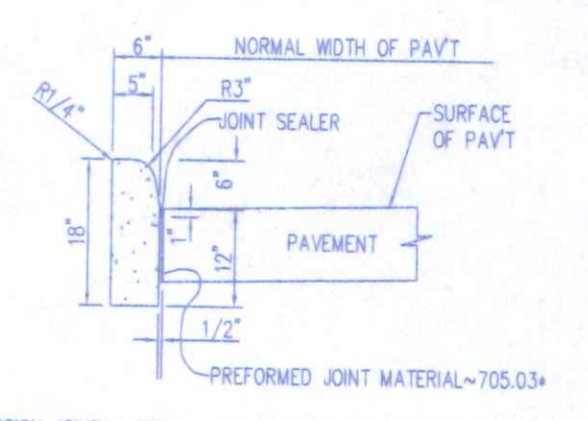


**SECTION**

**CATCH BASIN TYPE A-3A**  
WITH 24\"/>

NOTE: PRECAST 6\"/>

NOT TO SCALE



**TYPE 6**

**CURB DETAILS**  
SCALE: NONE

\* EXPANSION JOINT MATERIAL AND JOINT SEALER IS NOT REQUIRED FOR THAT PORTION OF THE CURB WHICH IS ADJACENT TO A FLEXIBLE PAVEMENT. BOTH MATERIALS ARE REQUIRED AS DETAILED FOR THE FULL HEIGHT OF RIGID PAVEMENT AND CONCRETE BASES.



**POGEMEYER DESIGN GROUP, INC.**  
ARCHITECTS  
1168 NORTH MAIN STREET  
BOWLING GREEN, OHIO 43402  
(419) 352-7537

**WALKER FUNERAL HOME**  
**REX WALKER**  
**NAPOLEON, OHIO**

**COMBINED TOPO/LAYOUT PLAN**

DRAWN BY: R/JH  
CHECKED BY: HEP  
REVISION:

1 OF 1  
JOB NUMBER: 7393-002

RECEIVED  
NOV 10 1997  
CITY OF NAPOLEON

**333 W. Main**

UNDERGROUND UTILITIES

TWO WORKING DAYS BEFORE YOU DIG

Call 1-800-362-2764 (Toll Free)

OHIO UTILITIES PROTECTION SERVICE

NON-MEMBERS MUST BE CALLED DIRECTLY